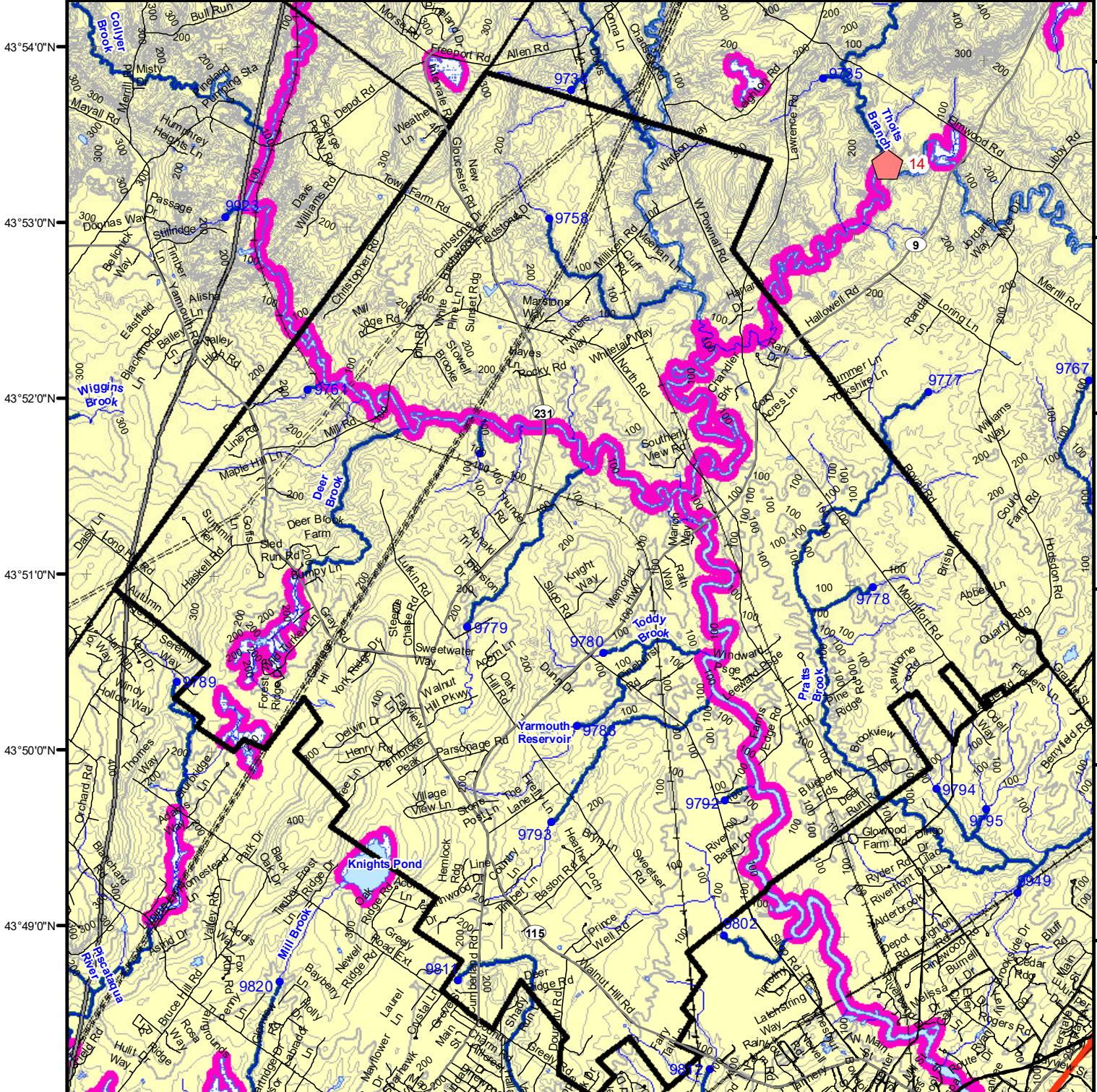


70°18'0"W 70°17'0"W 70°16'0"W 70°15'0"W 70°14'0"W 70°13'0"W 70°12'0"W 70°11'0"W



This map is ADVISORY, for planning purposes only. Actual ground conditions and water body locations determine where and how MFS timber harvesting rules apply. Contact the MFS for additional information/assistance from a MFS Forester.

Not a legal survey map

Statewide Standards

Buffers

- 250 Foot Buffer Zones
- Great Ponds
- Non-forested Wetlands greater than 10 acres
- Rivers below the 25 square mile drainage point
- Coastal Wetlands
- Tidal Waters
- Essential Wildlife Habitat (Least Tern, Roseate Tern, Piping Plover)

75 Foot Buffer Zones

- Streams between the 300 acre drainage point and the 25 square mile drainage point

Shoreline Integrity - Streams draining less than 300 acres, ponds and non-forested Wetlands greater than 0.1 acres and less than 10 acres

Shoreline Integrity also applies to UNMAPPED streams and wetlands.

Habitat

- Essential Wildlife Habitat (Least Tern, Roseate Tern, Piping Plover)

Forest Operation Notification & Shoreland Area* Map

North Yarmouth

Adoption Date
7/18/2008

December 2021

*See MFS Rule - Chapter 2.1 for additional information.

Department of Agriculture, Conservation and Forestry
Maine Forest Service
Forest Policy & Management

Roads

- Interstate
- US Highway
- State Highway
- 24k Roads

Hydrology

- Pond or Lake
- River
- Estuary

Streams

- Electric
- Pipeline
- Railroad
- Airfield

Contours

- 20 ft
- 100 ft

Utilities

- Electric
- Pipeline
- Railroad
- Airfield

Data Source:
Maine Office of GIS

G.T.Miller E:\sw\GIS\SW S page size december 2021.mxd

LO Last Name _____

LO First Name _____

Prepared By _____

FONS # _____

Date _____

FON Town _____

- Statewide Standards Rules do not apply (Town/MDEP Standards apply)
- Statewide Standards Rules Apply
- LUPC - Unorganized or Deorganized Town
- Outside Maine

0 2,000 4,000 8,000 Feet